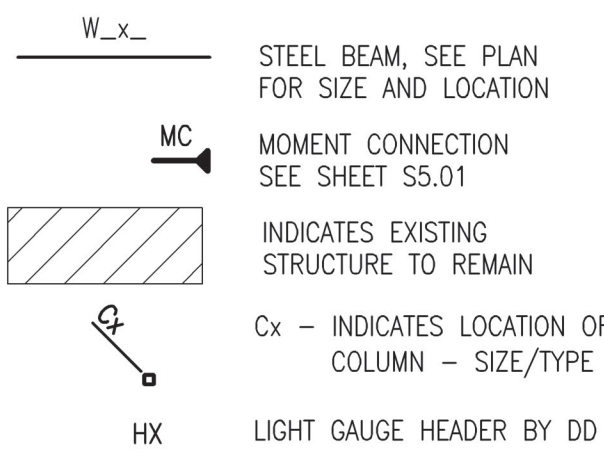
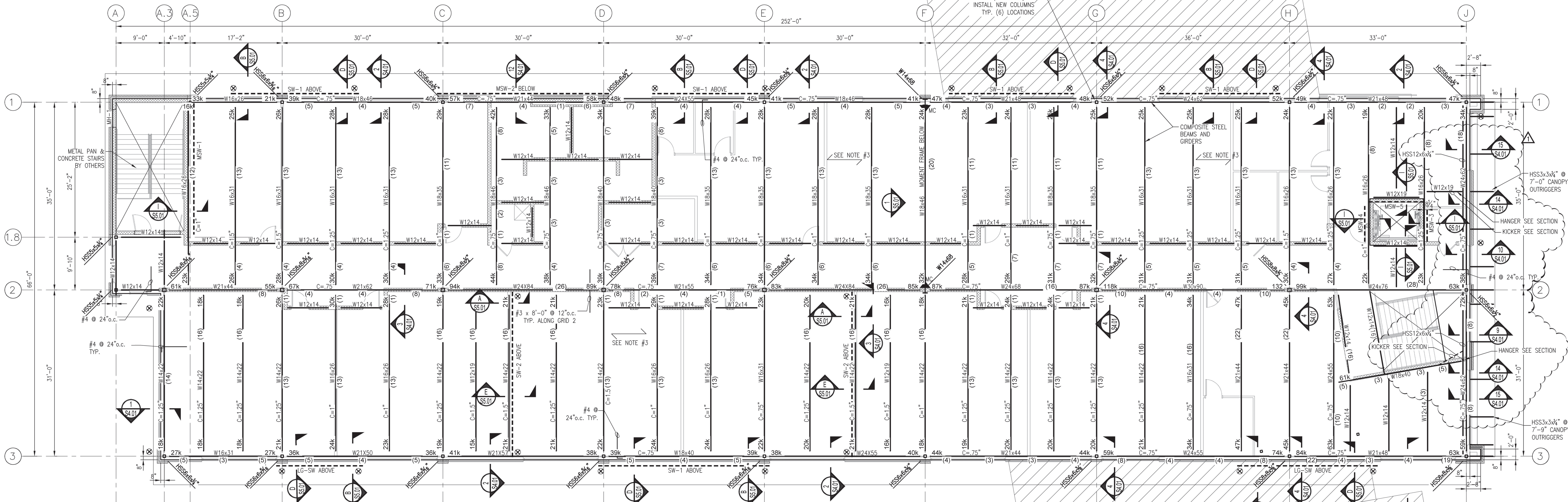
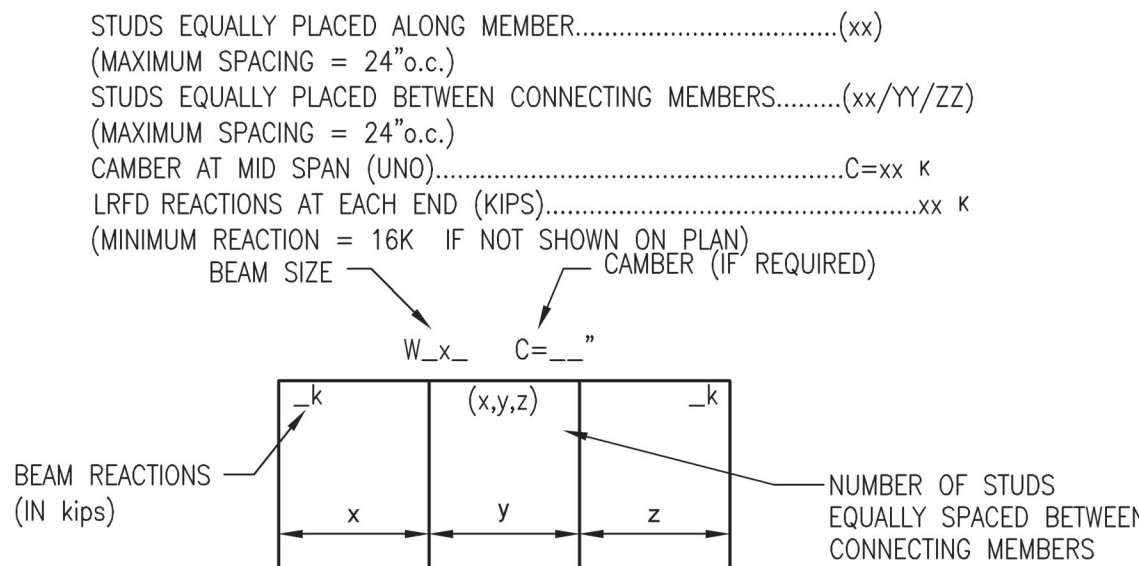


FLOOR FRAMING LEGEND



FLOOR FRAMING PLAN NOTES:

- TYPICAL SLAB ELEVATION IS +13'-8" ABOVE DATUM ELEVATION (ASSUMED 0'-0") TYPICAL T/STEEL BEAM OR GIRDER IS 5/8" BELOW T/SLAB U.N.O.
- SEE S1.0 SERIES SHEET FOR GENERAL NOTES, STEEL, DECK AND CONCRETE NOTES AND TYPICAL DETAILS.
- TYPICAL FLOOR SLAB IS 3 1/2" - 3000 PSI NORMAL WEIGHT CONCRETE TOPPING WITH 4.0 lbs/yd³ OF SYNTHETIC MACRO-FIBERS (TUF-STRAUD SF BY EUCLID, FIBER MAC SERIES BY BASF, FORTA-FERRO BY FORTA CORP. OR APPROVED EQUAL) ON 2", 19 GAUGE GALVANIZED COMPOSITE METAL FLOOR DECK VULCRAFT 2VLJ19 OR APPROVED EQUAL. TOTAL FLOOR SLAB SYSTEM IS 5 1/2" THICK.
- ALL BEAMS, GIRDERS AND COLUMNS BE ASTM A992, GRADE 50.
- SEE SHEET S5.01 FOR BRACE FRAMES, MASONRY SHEAR WALL, AND LIGHT GAUGE SHEAR WALL INFORMATION.
- STEEL, METAL PAN AND CONCRETE STAIRS BY OTHERS. PROVIDE STAIRS AND INTERMEDIATE LANDINGS. COORDINATE ALL STAIR DIMENSIONS W/ ARCHITECTURAL DRAWINGS.
- DESIGNATIONS ON PLAN FOR BEAM REACTIONS, CAMBERS AND COMPOSITE BEAM SHEAR STUDS AS INDICATED BELOW. SEE "TYPICAL DETAILS" SHEET S1.0 SERIES SHEETS FOR STUD PLACEMENT DETAILS.



SECOND FLOOR FRAMING PLAN

SCALE: 1/8" = 1'-0"

EXISTING SMOKE STACK TO BE COMPLETELY DEMOLISHED. EXISTING OPENING TO BE ENLARGED FOR NEW ROOF HATCH

PROVIDE 1/4" x 2 1/4" LONG CONCRETE SORVES - BEAM TOP FLANGE TO EXISTING PLANKS. (2) ROWS @ 12" O.C.



**S A W Y E R
S H E R W O O D
& A S S O C I A T E
A R C H I T E C T U R E**
124 Market St, Wilmington, NC 28401
910.762.0892 s2a3.com

PARAMOUNT
ENGINEERING, P.A.
124 Market St, Wilmington, NC 28401
910.762.0892 s2a3.com

WE
WOODS ENGINEERING
Consulting Structural Engineers
254 North Front Street Suite 201
Wilmington, NC 28401
Phone: 910.343.8007
Fax: 910.343.8088
www.woodseng.com

CHEATHAM AND ASSOCIATES, P.A.
CONSULTING ENGINEERS
3412 ENTERPRISE DRIVE
WILMINGTON, NORTH CAROLINA 28405
PHONE: (910) 452-4219
FAX: (910) 452-4211
OFFICE@CHEATHAMPA.COM
WWW.CHEATHAMPA.COM
NC LICENSE# C-1073

WOODS ENGINEERING, P.A.
CORPORATE SEAL
No. C-1806
NORTH CAROLINA

NORTH CAROLINA
SEAL
19475
ENGINEER
DON R. WOODS

Digitally signed by Don R. Woods, PE
E-downloads@woodseng.com
Che-Dan R. Woods, PE
Che-Woods Engineering P.A.
Charlotte, NC 28203
Location: Wilmington, NC
Reason: I related to the accuracy and integrity of this document
Contact info: donwoods@woodseng.com
Date: 2019.02.19 15:31:27 -04'00'

Wrightsville Beach Elementary School Addition & Renovation

220 Coral Drive
Wrightsville Beach, NC

Construction Drawings
February 20, 2019

Revisions:

Δ	3-19-2019	ADDENDUM #1

Second Floor Framing Plan